

WATERLEIGH

— CURRITUCK RESERVE —



RELIANT
CONSTRUCTION

THE BUILDER'S STORY

Reliant Construction is a family owned and operated company that builds quality single family homes in the communities of coastal Virginia and North Carolina. Our president, Terry Neal, has been building in the area since 1981 and has a solid reputation for building quality homes that create happy, satisfied homeowners. His homes are well known for their large rooms, ample closet space and quality construction.

Joining Terry at Reliant are his son, Greg and two daughters, Angie and Kim. Greg has been supervising the actual construction of homes since 2000. He is always eager to meet with homebuyers and truly likes forming a one-on-one relationship with them. Angie and Kim work behind the scenes in office management, but are always available to answer any questions.

The new generation at Reliant promises to carry on the same philosophy and tradition that Terry established decades earlier — building quality homes and making happy, satisfied homeowners. We believe the success of any new project depends on the talent and dedication of the team that brings it to life. And the homebuyer is an integral part of that team. With your vision and our expertise on the team, your home buying experience is sure to be both enjoyable and memorable. That's what we call a Reliant-built home.



WATERLEIGH

— CURRITUCK RESERVE —



THE CALEB

STANDARD FLOORPLAN SHOWN

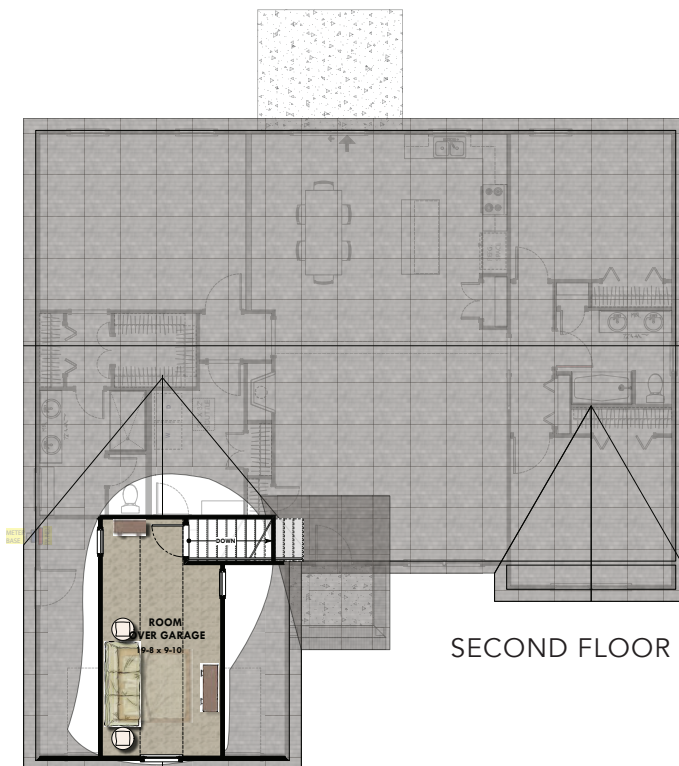


STANDARD ELEVATION



OPTIONAL ELEVATION WITH 3 CAR GARAGE

- 4 bedrooms
- 2 baths
- 2090 sf



SECOND FLOOR

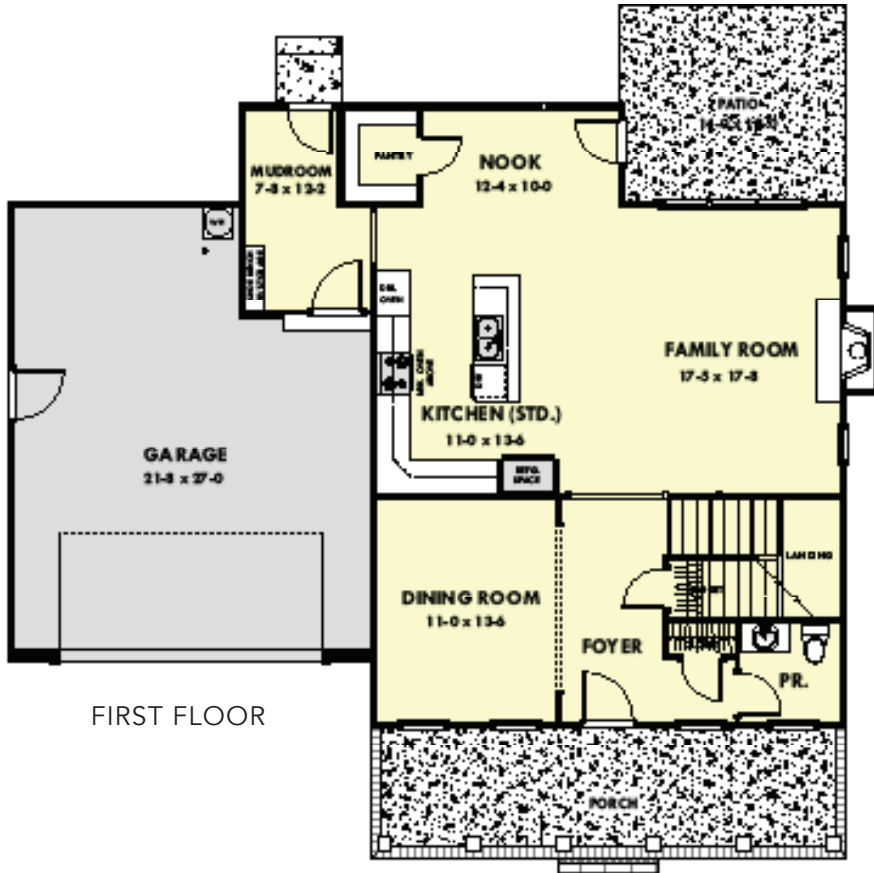
WATERLEIGH

— CURRITUCK RESERVE —

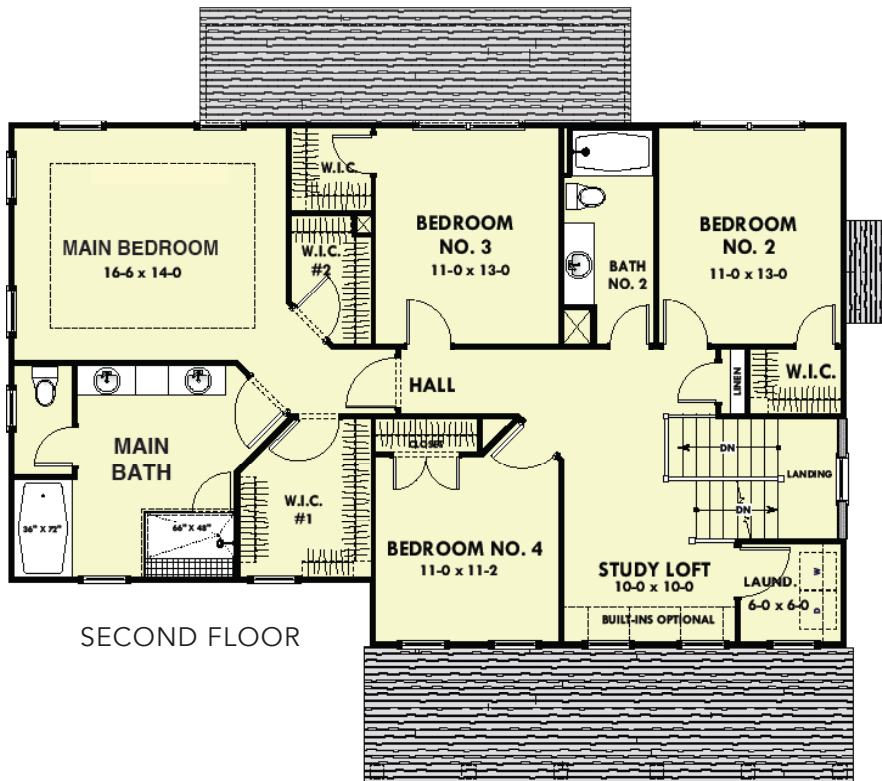
Builder Reserves the right to substitute plans, prices, components and specifications and withdraw or modify any plans without notice. Individual homes may vary from the models or each other depending on field conditions. Artist renderings, representative photography, and floorplans are subject to change without notice.

THE ETHANS MILL

STANDARD FLOORPLAN SHOWN



FIRST FLOOR



SECOND FLOOR



STANDARD ELEVATION



OPTIONAL CRAFTSMAN ELEVATION

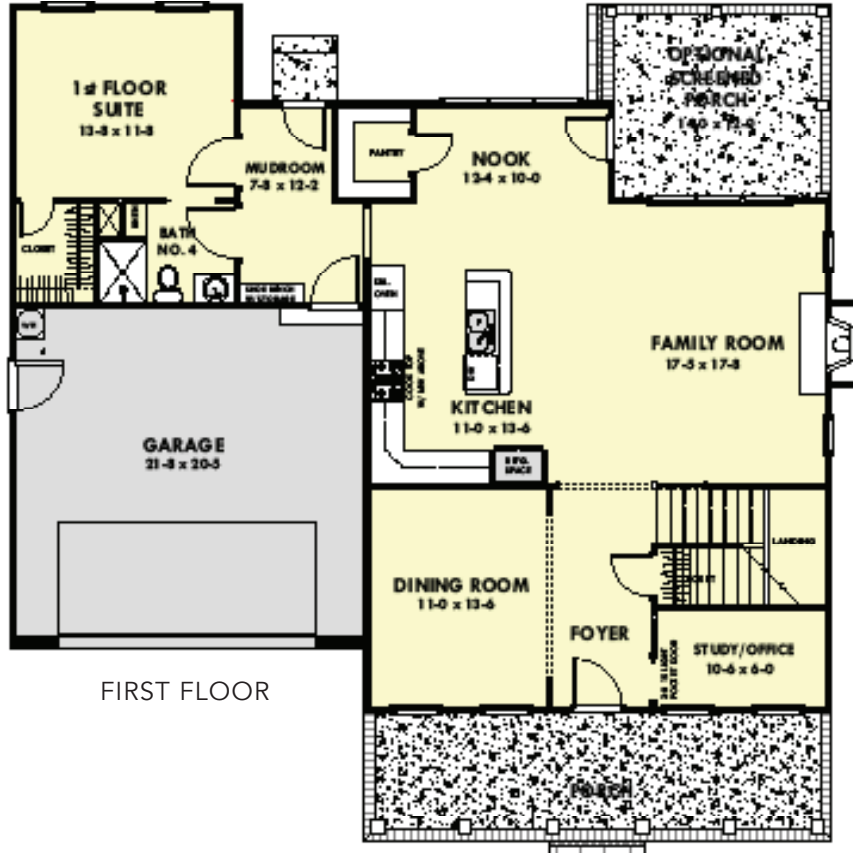
- 4 bedrooms
- 2.5 baths
- 2667 sf

WATERLEIGH
— CURRITUCK RESERVE —

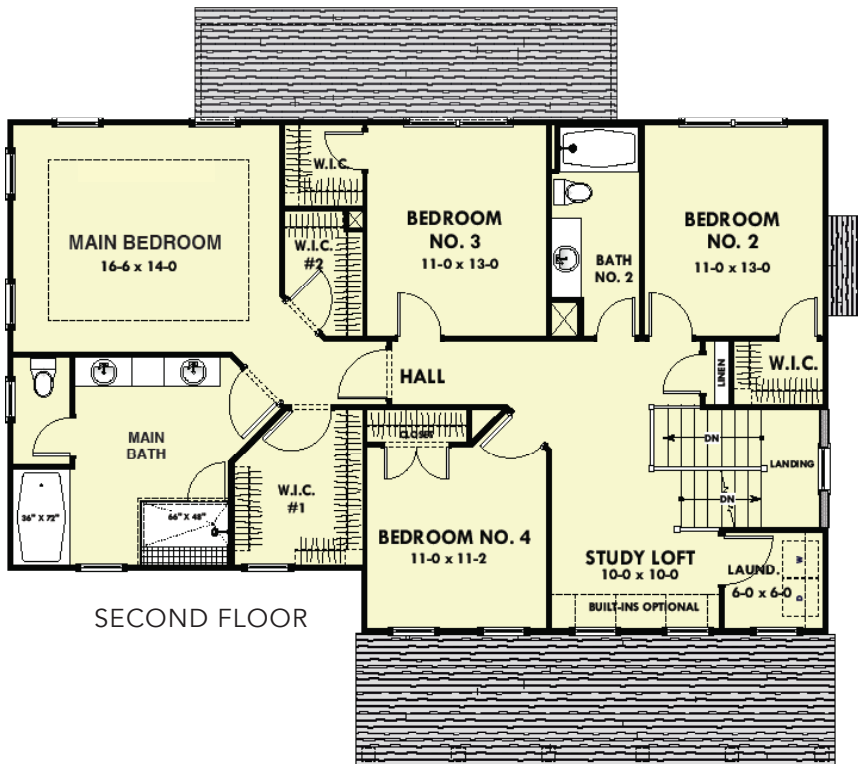
Builder Reserves the right to substitute plans, prices, components and specifications and withdraw or modify any plans without notice. Individual homes may vary from the models or each other depending on field conditions. Artist renderings, representative photography, and floorplans are subject to change without notice.

THE ETHANS MILL II

STANDARD FLOORPLAN SHOWN



FIRST FLOOR



SECOND FLOOR



STANDARD ELEVATION



OPTIONAL CRAFTSMAN ELEVATION

- 4/5 bedrooms
- 3 baths
- 2927 sf

WATERLEIGH
— CURRITUCK RESERVE —

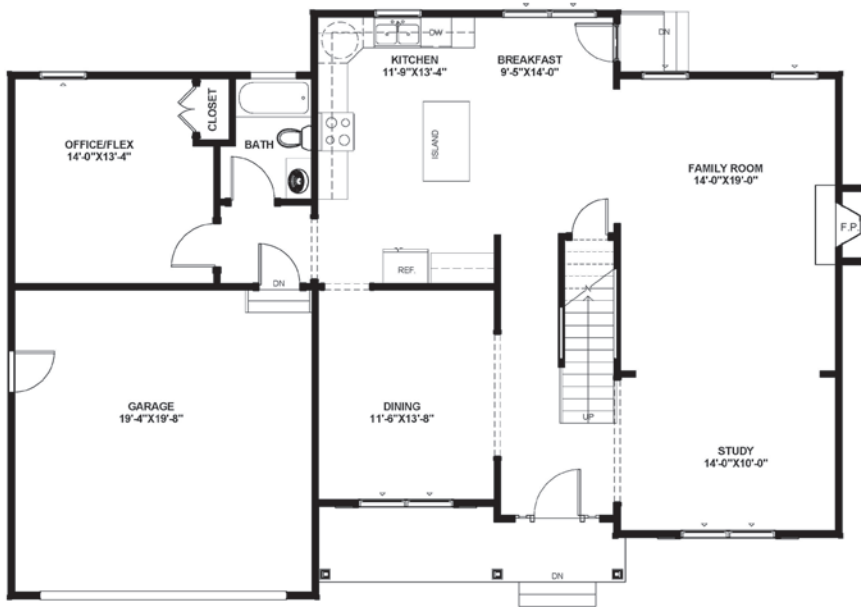
Builder Reserves the right to substitute plans, prices, components and specifications and withdraw or modify any plans without notice. Individual homes may vary from the models or each other depending on field conditions. Artist renderings, representative photography, and floorplans are subject to change without notice.

THE CATHERINE I

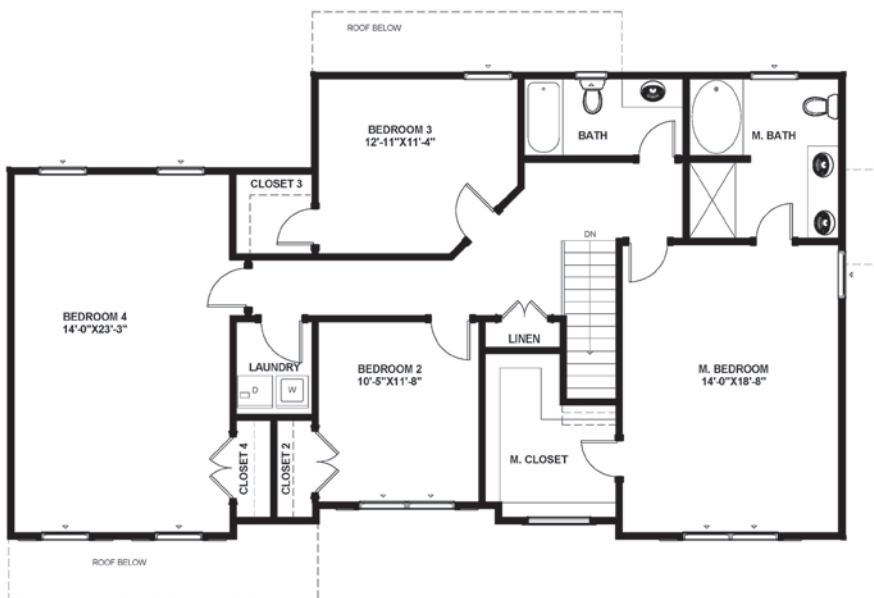
STANDARD FLOORPLAN SHOWN



STANDARD ELEVATION



FIRST FLOOR



SECOND FLOOR

- 4 *bedrooms*
- 3 *baths*
- 2792 *sf*

WATERLEIGH

— CURRITUCK RESERVE —

Builder Reserves the right to substitute plans, prices, components and specifications and withdraw or modify any plans without notice. Individual homes may vary from the models or each other depending on field conditions. Artist renderings, representative photography, and floorplans are subject to change without notice.

Simply Live

When you arrive into Currituck County, the farmland serves as a lush backdrop, and you immediately feel more relaxed and centered. Waterleigh is a community built around all that Currituck County has to offer—lower taxes, awesome schools, and easy access to the Mid-Atlantic coast.



Community from the Ground Up

Waterleigh comprises thoughtful design from the architecture and landscaping of each home to the infrastructure of the entire community. Neighbors can embrace the outdoors in their large backyards, leaving phones and laptops behind. Sidewalk strolls under the warm sun provide opportunities to spend more time with loved ones, visit with neighbors, and return to simplicity.



WATERLEIGH

Designed for Reconnecting

Waterleigh is a neighborhood that will remind you of tales of when life was simpler. As you drive down the winding entrance road, your stress melts away, and you connect to the relaxed lifestyle this community offers. The architectural elements of the house, sidewalks, and open space nurture community residents and create an unrivaled lifestyle.



A Nature-Infused Neighborhood

In today's technology-dependent lifestyle, being close to nature becomes more important than ever for our overall well-being. The green fields and fresh air of Waterleigh give our residents the space to relax and recharge. The neighborhoods of yesteryear are infused into this fresh community design. A community that supports and encourages well-being is achieved through streetscapes, open space design, architecture, and construction.



WATERLEIGH



2022/04/06

WATERLEIGH

— CURRITUCK RESERVE —

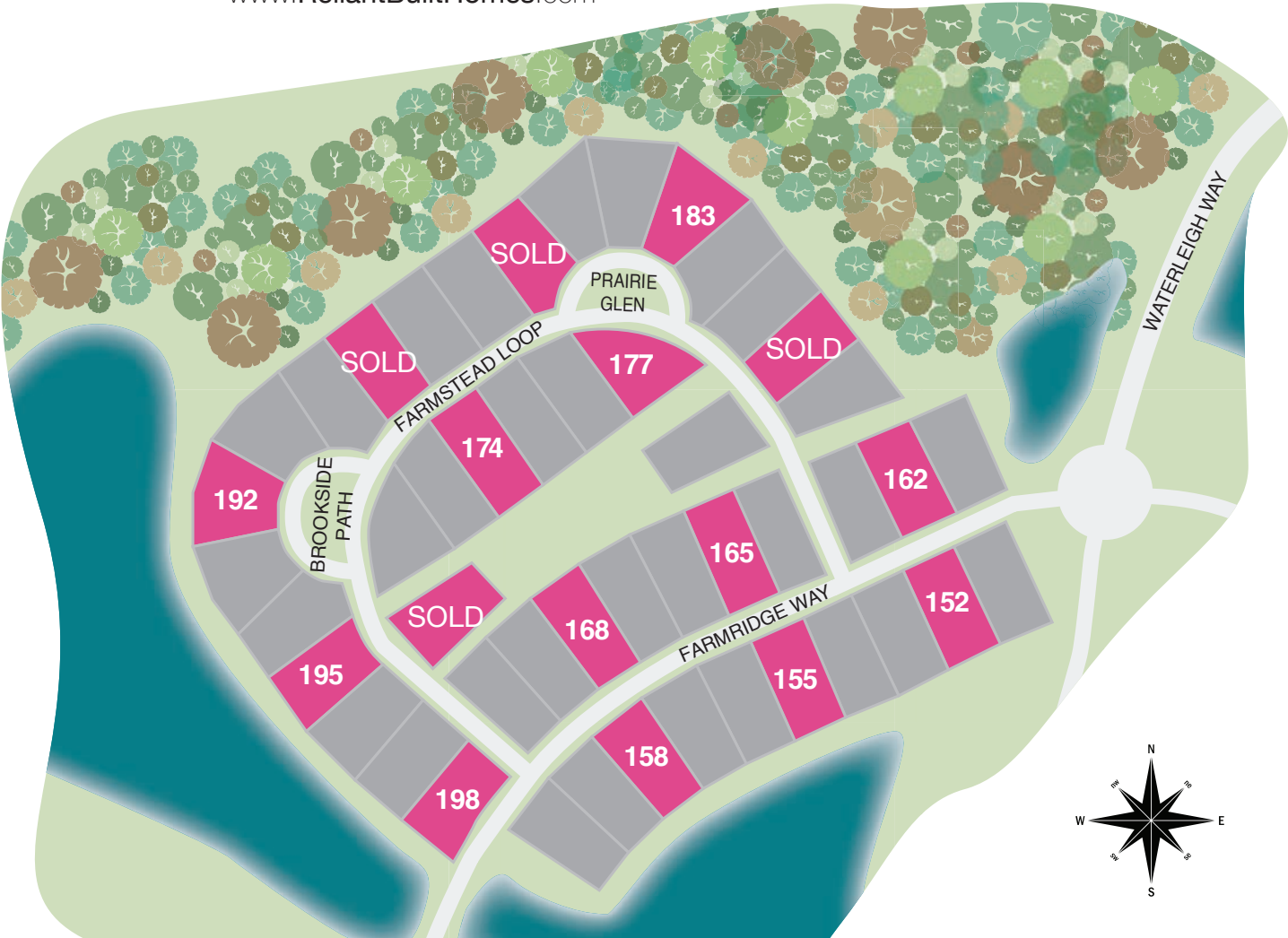


RELIANT
CONSTRUCTION

www.ReliantBuiltHomes.com



Real Estate Services



www.WATERLEIGHNC.com

STANDARD FEATURES

Exterior

- Raised Solid Foundation with Brick Skirt on front of house
- Premium Vinyl Siding
- Vinyl Shakes Accents (Certain Models)
- Maintenance Free Vinyl Shutters (Certain Models)
- Low Maintenance Exterior with wrapped trim, vinyl soffits and porch ceiling
- Seamless Gutter and Downspouts
- 30 Year Architectural Roof Shingles- Algae Resistant
- Insulated Fiberglass Front Entry Door
- Security Deadbolt Locks Front, Rear and Garage Service Doors
- Insulated Metal Raised Panel Garage Doors with Windows
- ★ **Garage Personal Door with concrete sidewalk to driveway (except side loading Garage)**
- Professionally Landscaped with Sod in front yard
- Water Hose Connections, Front & Rear
- Weather proof receptacles Front & Rear
- Concrete Walk and Driveway-Broom Finish
- ★ **Broom finish Concrete Patio (per plan)**
- 20,000 sq. ft. minimum Home Sites

Kitchen

- Birch Wood Cabinets
- 42" Upper Cabinets in Kitchen
- Granite Kitchen countertops with double under mount stainless steel sink
- Center island with pendant lights in most models
- ★ **Frigidaire Stainless Steel Gourmet Appliance Package with Gas Cooktop, Microwave, Dishwasher and Double Ovens in most models**
- Eat in Kitchen – Most models
- Ice Maker Hook Up
- Delta Single lever faucet-Chrome
- Six recessed lights

Baths

- ★ **Main Bath:**
- ★ **Tub with Tile Surround (most models)**
- ★ **Separate Shower with Tile surround and Glass door**
- ★ **Granite (Level 1) Countertop with two under mount white porcelain bowls**
- ★ **Tile Floors**
- All Baths:
 - Exhaust Fans
 - Water Saver Shower Heads & Toilets
- ★ **Adult Height Vanities**
- Delta Faucets- Chrome Finish
- Elongated Toilets
- Powder Room- Pedestal sink with oval mirror- Certain Models
- Cultured Marble Vanity Tops- Except Main Bath
- No wax vinyl flooring- Except Main Bath and Certain First Floor Rooms

Interiors

- Nine Foot (9') Ceilings First Floor
- ★ **LVT Flooring in all First Floor Rooms Except Bed Rooms and Bedroom Closets**
- No wax Vinyl Flooring in Second Floor Baths (except Main), Laundry, and Utility Room
- Wall to Wall Carpeting –unless otherwise noted
- ★ **Six (6) pound upgrade Carpet Padding**
- ★ **Gas Fireplace with painted Custom Fireplace Mantle with Granite Hearth and Surround**
- ★ **Dining Room: Two Piece Crown Molding and Chair Rail; one piece crown molding in all other 1st floor rooms (except bath or bedroom)**
- Texture Finished Sheetrock Walls and Ceilings
- ★ **Fully Finished Garage Walls and Ceiling-Textured and Painted**
- Raised panel Interior Doors

- Decorator Brushed Nickel lighting package
- Pull down attic stairway
- Custom Designed Closets with ventilated shelving
- Satin Nickel Door- Locks, Hinges and Stops

Electrical Features

- ★ **Ceiling Fans in Family Room and Main Bedroom**
- Ceiling Fan Pre-Wire in all Bedrooms
- 200 Amp Electrical Service
- Hard wired smoke detectors
- ★ **Garage Door Opener with one remote**
- ★ **Structured Wiring**
- Central Main Panel Access Box
- Data Pre-Wire in 2 locations
- Cable Pre-Wire in Family Room and All Bedrooms
- Telephone Hookup in 1 location
- Pre-wire 1 Surround Sound system
- Pre-Wire Security System Downstairs Doors - Hardwired

Energy Saving

- Efficient 2 Zone Gas Heating-Most Models
- 14 Seer Efficient 2 Zone Air Conditioning-Most Models
- Insulated Vinyl Windows with low E glass and screens
- R-38 Insulated Ceilings
- House Wrap-Air and Water Barrier
- Energy Efficient Gas Fireplace with logs
- 50 Gallon Quick Recovery Energy efficient Gas Hot Water Heater
- Sealed Duct Work
- Poly Seal Air filtration Package
- Programmable Thermostats
- Insulated Energy Efficient Entry Doors

Additional Features

- 2-10 Year Builders Warranty through Quality Builders Warranty
- One Year Builder Warranty

★ Other builders options that are included in a Reliant home!

Nancy Bass
(757) 681-3573
NBass@howardhanna.com



Builder Reserves the right to substitute plans, prices, components and specifications and withdraw or modify any plans without notice. Individual homes may vary from the models or each other depending on field conditions. Artist renderings, representative photography, and floorplans are subject to change without notice.

